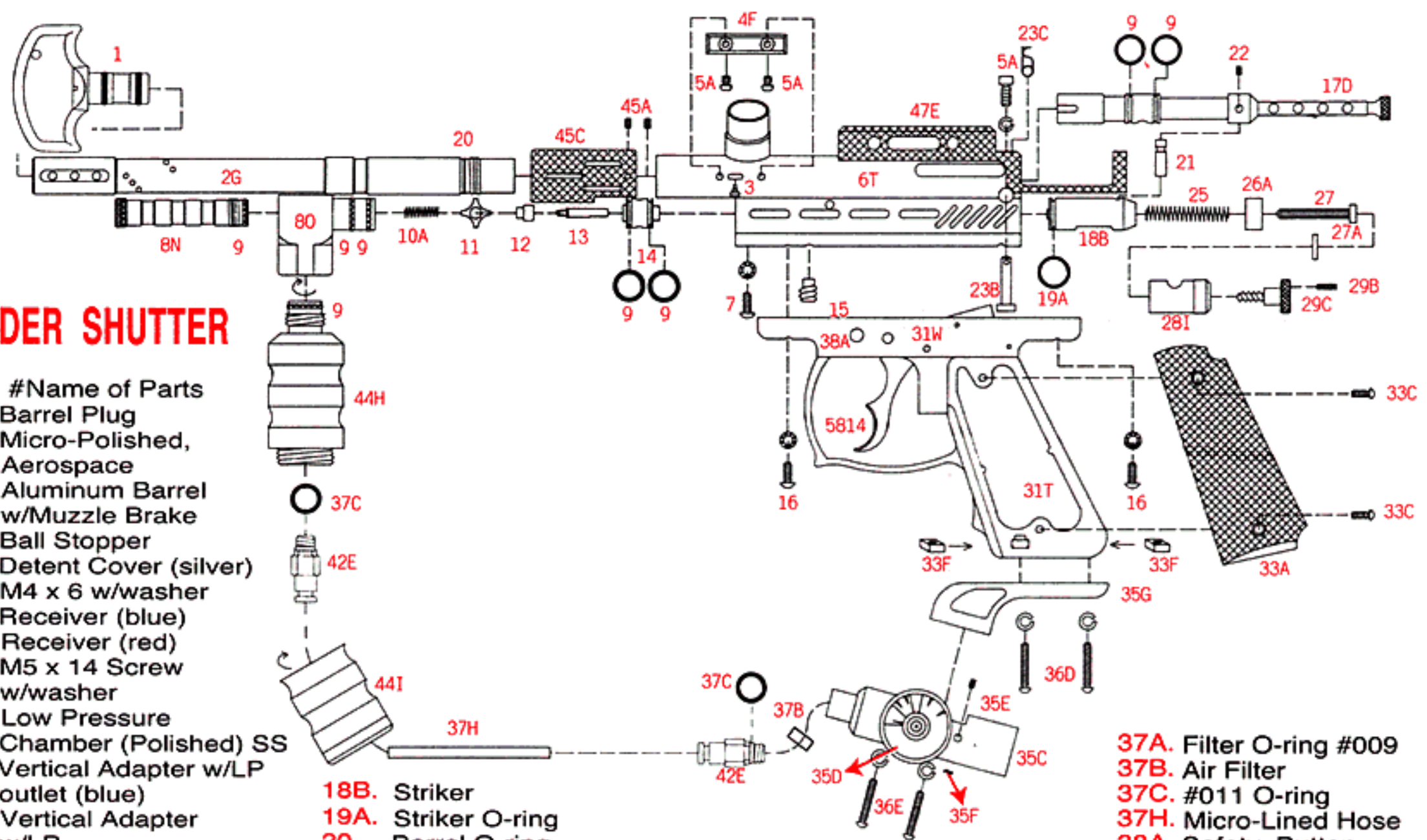


# Spyder Shutter



## SPYDER SHUTTER

**ITEM #** Name of Parts

- 1.** Barrel Plug
- 2G.** Micro-Polished, Aerospace Aluminum Barrel w/Muzzle Brake
- 3.** Ball Stopper
- 4F.** Detent Cover (silver)
- 5A.** M4 x 6 w/washer
- 6T.** Receiver (blue)
- 6U.** Receiver (red)
- 7.** M5 x 14 Screw w/washer
- 8N.** Low Pressure Chamber (Polished) SS
- 8O.** Vertical Adapter w/LP outlet (blue)
- 8P.** Vertical Adapter w/LP
- 9.** O-ring #015 80D
- 10A.** Valve Spring
- 11.** Cup Seal Guide
- 12.** Cup Seal
- 13.** Valve Pin
- 14.** Valve Body
- 15.** Valve Body Screw
- 16.** M5 x 12 Screw with washer
- 17D.** Zebra Rear-Cocking Bolt (blue)
- 17E.** Zebra Rear-Cocking Bolt (red)
- 18B.** Striker
- 19A.** Striker O-ring
- 20.** Barrel O-ring
- 21.** Bolt Pin
- 22.** Bolt Screw
- 23B.** Quick Disconnect Pin
- 23C.** Disconnect Lock Pin
- 25.** Striker Spring
- 26A.** Striker Buffer
- 27.** Striker Spring Guide
- 27A.** Flat Disk
- 28I.** Striker Bolt Plug (silver)
- 29B.** Lock Screw
- 29C.** Thumb Adjuster w/screw
- 31W.** Deluxe Double Trigger Frame & Assembly
- 33A.** 45 Grip Cover
- 33C.** Grip cover screws
- 33F.** Nut Screw
- 35C.** C/A Adapter with Regulator
- 35D.** Gauge
- 35E.** Regulator Adjust Screw
- 35F.** M4 x 5 Screw
- 35G.** Drop Forward
- 36D.** Drop Forward Grip Screw (5/32" x 7/8" screw)
- 36E.** 5/32"x7/8" screw with washer"
- 37A.** Filter O-ring #009
- 37B.** Air Filter
- 37C.** #011 O-ring
- 37H.** Micro-Lined Hose
- 38A.** Safety Button
- 40.** Powerfeed Plug
- 41G.** Spare Parts Kit
- 42E.** Quick Release Micro-Line Hose Adapter
- 44H.** Model S Expansion Chamber (silver)
- 44I.** Mini Fore Grip (blue)
- 44J.** Mini Fore Grip (red)
- 45A.** Shroud Screw M4 x 4
- 45C.** Shroud
- 47E.** Sight Rail w/ Beaver Tail (silver)