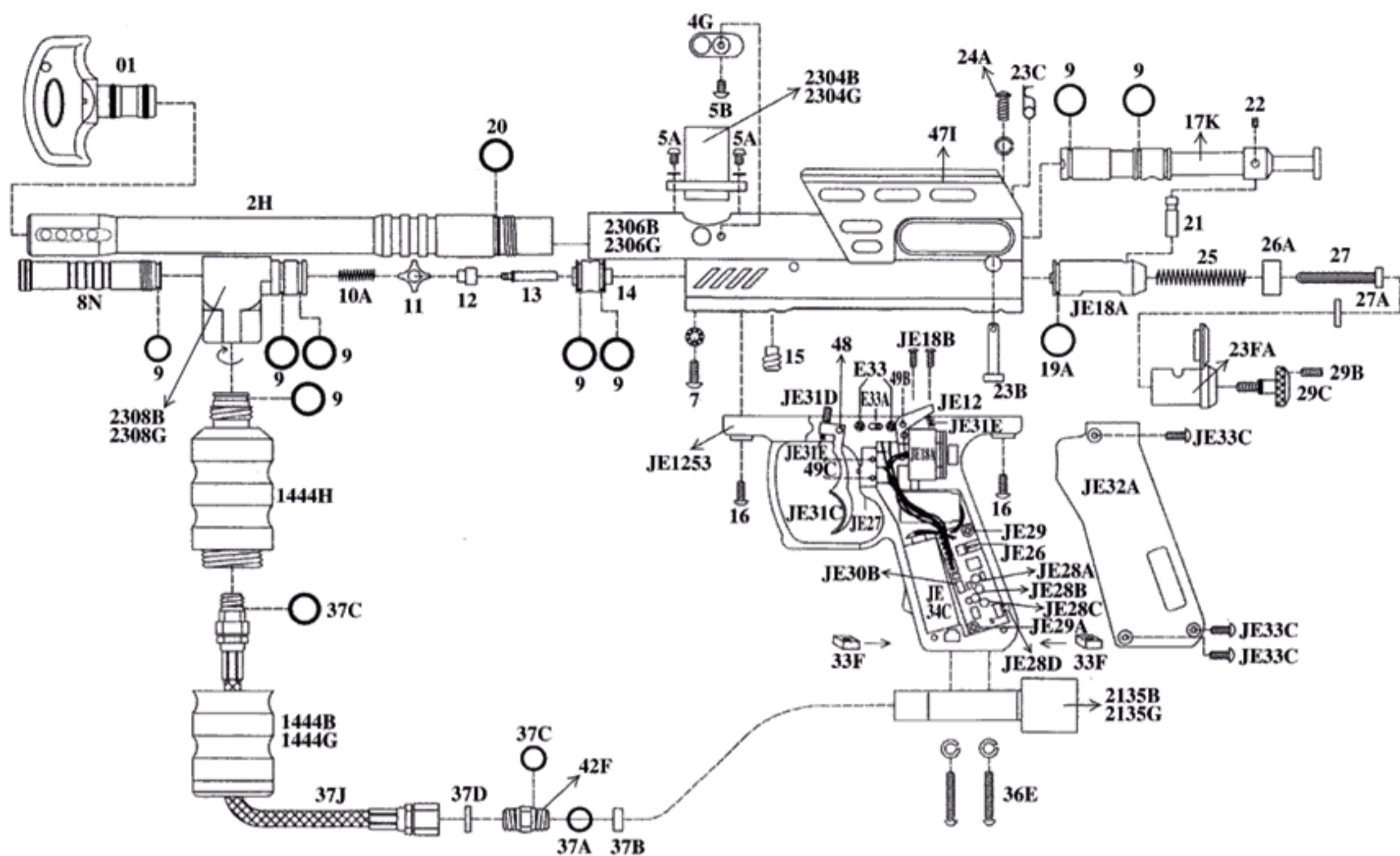


Spyder Imagine



| ITEM # | NAME OF PART(S) | ITEM # | NAME OF PART(S) |
|--------|--------------------------------------|--------|-------------------------------------|
| 01 | Spyder Barrel Plug | 29C | Thumb Adjuster w/ Screw (Silver) |
| 2H | Imagine 9 1/2" Barrel (Silver) | 36E | 5/32" x 7/8" Screw w/Washer (Black) |
| 04G | Detent Cover | 37A | Filter O-Ring #009 |
| 05A | M4 x 6 Screw (Silver) | 37B | Air Filter |
| 05B | M4 x 8 Screw (Black) | 37C | Disconnect O-Ring #011 (Black) |
| 07 | M5 x 12.5 Screw w/ Washer | 37D | Plastic Washer |
| 09 | O-Ring #015 80D | 37J | Disconnect Hose |
| 10A | Valve Spring | 41K | Imagine Parts Kit |
| 11 | Cup Seal Guide | 47I | Imagine Sight Rail (Silver) |
| 12 | Cup Seal | 48 | Trigger Roll Pin (Large) |
| 13 | Valve Pin | E40 | Straight Elbow -2 3/4" (Clear) |
| 14 | Valve Body | JE28 | Circuit Board (I.P.I) |
| 15 | Valve Body Screw | JE28A | Low Battery Indicator |
| 16 | Trigger Frame Screw w/Washer (M5X12) | JE28B | R.O.F Indicator |
| 17K | Imagine Venturi Cocking Bolt | JE28C | Mode Indicator |
| 19A | Striker O-Ring | JE28D | Tack Switch |
| 20 | Barrel O-Ring (Black) | JE30B | Lock Switch |
| 21 | Bolt Pin | JE1253 | Imagine Trigger Frame (Black) |
| 2304B | Imagine Direct Feed (Black) | JE31D | Trigger Adjust Screw |
| 2304G | Imagine Direct Feed (Green) | JE31E | Trigger Spring |
| 2306B | Imagine Receiver (Black) | JE31C | Trigger |
| 2306G | Imagine Receiver (Green) | E33A | ON/OFF Switch |
| 2308B | Imagine Vertical Adapter (Black) | E33 | ON/OFF Screw (M2X6) |
| 2308G | Imagine Vertical Adapter (Green) | JE27 | Touch Switch |
| 08N | Low Pressure Chamber (Silver) | JE12 | Seal |
| 23FA | Striker Plug (Silver) | JE18B | Coil Set Screw (1/8") |
| 22 | Bolt Screw | JE31E | Sear Spring |
| 23B | Quick Disconnect Pin | JE18A | Coil Set |
| 2135B | C/A Adapter (Black) | JE29 | Circuit Board Screw |
| 2135G | C/A Adapter (Green) | JE26 | Charge Pin |
| 1444B | Nini Fore Grip (Black) | JE34C | Rechargeable Battery (Not Included) |
| 1444G | Nini Fore Grip (Green) | JE32A | Grip Cover |
| 1444H | Model S Expansion Chamber | JE33C | Grip Cover Screw |
| 23C | Disconnect Pin Lock | 49B | Secondary Roll Pin |
| 24A | Sight Rail Screw w/ Washer (M4X12) | 49C | Touch Switch Roll Pin |
| 25 | Striker Spring | JE18A | Striker Bolt |
| 26A | Striker Buffer | 19A | Striker Bolt O-Ring |
| 27 | Striker Spring Guide | 33F | Nut Screw Insert |
| 27A | Flat Disc | | |
| 29B | Lock Screw | | |