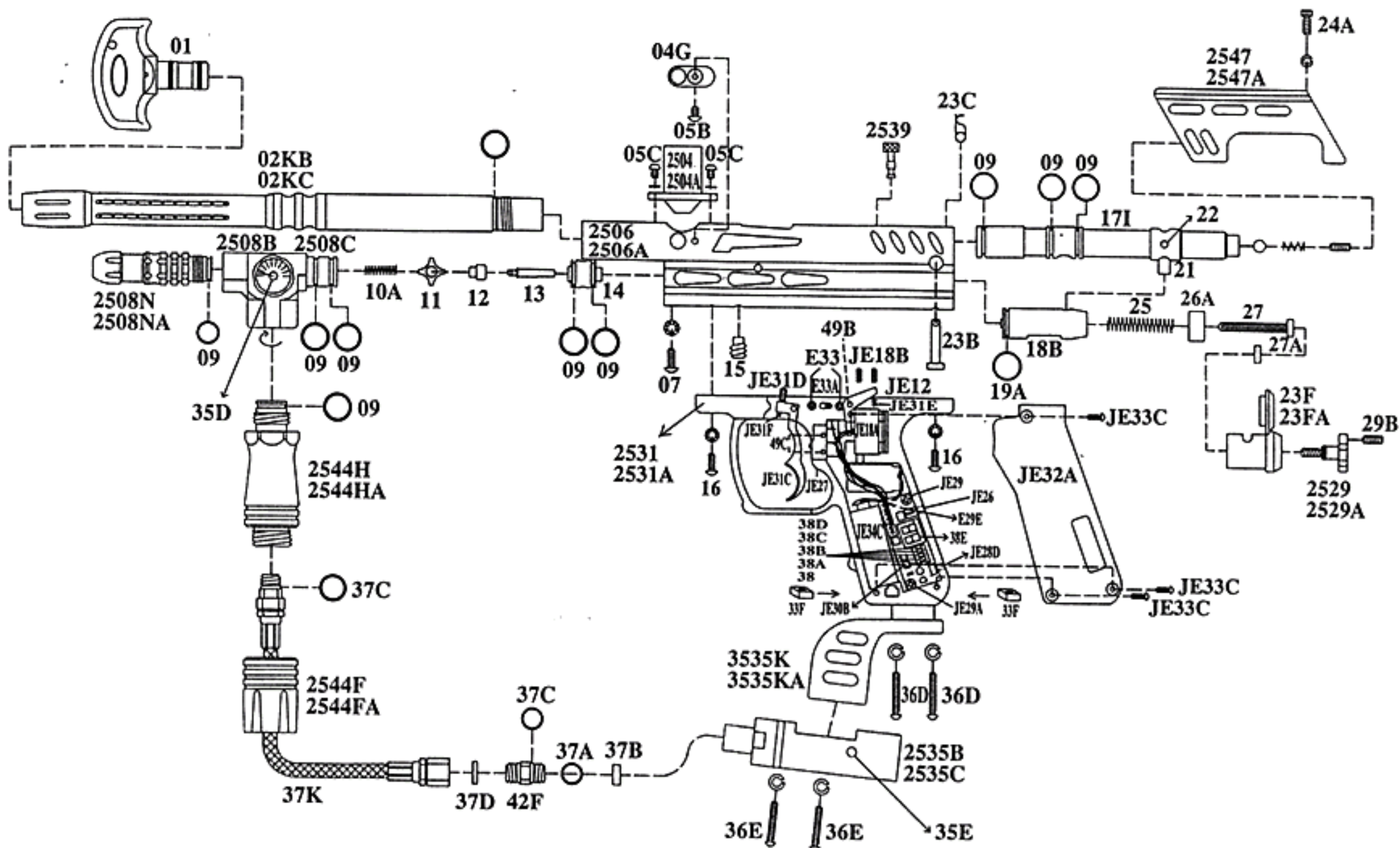


Spyder Electra DX



NEW ITEM #	NAME OF PARTS	NEW ITEM #	NAME OF PARTS
01	Spyder Barrel Plug	2529A	Thumb Adjuster w/ Screw (Blue)
02KB	Electra 14" Barrel (Black)	35D	Spyder Gauge
02KC	Electra 14" Barrel (Blue)	35E	Regulator Screw
04G	Detent Cover	2535K	Electra Drop Forward (Black)
05B	M4 x 6 Screw (Black)	2535KA	Electra Drop Forward (Blue)
05C	Direct Feed Screw w/Washer	36D	5/32" x 5/8" Screw (Black)
07	M5 x 14 Screw w/Washer	36E	5/32" x 7/8" Screw (Black)
09	O-Ring #015 80D	37A	Filter O-Ring
10A	Valve Spring	37B	Air Filter
11	Cup Seal Guide	37C	Disconnect O-Ring #011 (Black)
12	Cup Seal	37D	Plastic Washer
13	Valve Pin	37K	Disconnect Hose
14	Valve Body	2539	Electra Cocking Knob
15	Valve Body Screw	2541	Electra Spare Parts Kit
16	M5 x 12 Screw w/Washer	2547	Electra Sight Rail (Black)
17I	Electra Venturi Cocking Bolt	2547A	Electra Sight Rail (Blue)
18B	Striker	E40	Straight Elbow - 2 3/4" (Clear)
19A	Striker O-Ring	E29E	LED Circuit Board
2504	Direct Feed (Black)	JE28D	Tack Switch
2504A	Direct Feed (Blue)	JE30B	Lock Switch
2508B	Vertical Adapter w/ Gauge (Black)	38	Battery low indicator
2508C	Vertical Adapter w/ Gauge (Blue)	38A	Mode indicator (Semi)
2508N	Low Pressure Chamber (Black)	38B	Mode indicator (Burst 3)
2508NA	Low Pressure Chamber (Blue)	38C	Mode indicator (Burst 6)
23F	Striker Plug (Black)	38D	Mode indicator (Full)
23FA	Striker Plug (Silver)	38E	Shots/Sec indicator
2535B	C/A Adapter w/ Regulator (Black)	JE31D	Trigger Adjust Screw
2535C	C/A Adapter w/ Regulator (Blue)	JE31F	Trigger Spring
2544F	Mini Fore Grip (Black)	JE31C	Trigger
2544FA	Mini Fore Grip (Blue)	E33A	ON/OFF Switch
2544H	Model S Expansion Chamber (Pewter)	E33	ON/OFF Screw (M2X6)
2544HA	Model S Expansion Chamber (Silver)	JE27	Touch Switch
21	Bolt Pin	JE12	Seal
22	Bolt Screw	JE18B	Coil Set Screw (1/8")
23B	Quick Disconnect Pin	JE31E	Sear Spring
23C	Disconnect Pin Lock	JE18A	Coil Set
24A	M4 X 12 w/Washer	JE29	Circuit Board Screw
25	Striker Spring	JE26	Charge Pin
26A	Striker Buffer	JE34C	Rechargeable Battery
27	Striker Spring Guide	JE32A	Grip Cover
27A	Flat Disc	JE33C	Grip Cover Screw
29B	Lock Screw	49B	Secondary Roll Pin
2531	Electra Electronic LED Trigger Frame (Black)	49C	Touch Switch Roll Pin
2531A	Electra Electronic LED Trigger Frame (Silver)	33F	Nut Screw Insert
2529	Thumb Adjuster w/ Screw (Black)		